



THERMAL ANALYTICS CAMERA

ELARA™ FC-SERIES ID

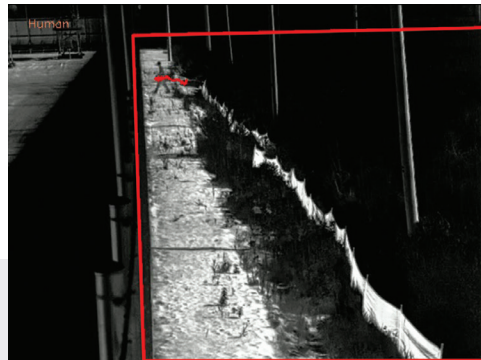
The Elara FC-Series ID combines best-in-class thermal image detail and high-performance edge perimeter analytics in a single device that delivers optimal intrusion detection in challenging environments and extreme conditions. Elara FC-Series ID cameras feature on-board video analytics optimized for FLIR's thermal sensors. Easy to set up and capable of classifying human or vehicular intrusions, Elara FC-Series ID cameras provide reliable detection with low false alarm rates, all without human intervention.



RELIABLE ONBOARD ANALYTICS

Accurately classify humans and vehicles

- Auto calibration for depth setup for a simple and reliable configuration.
- No additional measurement tools are needed, requiring only a single installer on site
- Allows analytics in corridor mode, reducing the number of cameras and improving the total cost of ownership
- Target hand-off to PTZ camera auto-tracking



INDUSTRY-LEADING IMAGE QUALITY

Crisp, Clean Imagery for Unmatched Video Analytics Performance & Reliability

- Superior image quality in low-contrast conditions
- FLIR's custom AGCs provide images with extremely high contrast
- Dynamic Detail Enhancement (DDE) creates sharp edges and contrast that improve analytics performance



HIGH-PERFORMANCE LENSES

Wide Range of Lenses for Optimal Detection Ranges in All Conditions

- Choose from 17 high-performance lenses suitable for any perimeter or open area, including QVGA from 4° to 69° fields of view and VGA from 8° to 90° fields of view
- High performance optics deliver clear thermal video

SPECIFICATIONS

	Elara FC 3xx ID-Series	Elara FC 6xx ID-Series	
Image			
Array Format (NTSC)	320 x 240	640 x 480	
Detector type	Long-Life, Uncooled VOx Microbolometer		
Spectral range	7.5 μm to 13.5 μm		
Effective resolution	76,800 pixels	307,200 pixels	
Pixel Pitch	Effective 34 μm (FC-344,332& 369) 17 μm (all other models)	17 μm	
Thermal frame rate	NTSC: 30 Hz - PAL: 25 Hz / 8.3 Hz		
E-Zoom	4x continuous E-Zoom		
Focus	Athermalized, focus-free		
Sensitivity	<35mK for F# 1.0 optics		
Video			
Composite Video NTSC or PAL	Hybrid system with IP & analog video, Dynamic NTSC or PAL settings		
Analog Video Output Composite	1Vp-p (PAL or NTSC), 1 x BNC 75Ω		
Video Compression	Two independent channels of H.264 (Restricted VBR and CBR, 10kbps-4Mbps, MPEG4, and MJPEG)		
Streaming Resolution	D1: 720x576, 4CIF: 704x576, Native: 640x512, Q-Native: 320x256, CIF: 352x288, QCIF: 176x144		
Thermal AGC Modes Features	Brightness, Contrast, Sharpness, Grey Shade Compression, Gamma, Smart Screen Balance		
Thermal AGC Region of Interest (ROI)	Default, Presets and User definable to insure optimal image quality on subjects of interest		
Analytics Management	Web-based configuration and management. Masking of analytic detection areas, adjustable sensitivity, automatic responses, remote I/O control		
Analytics Features	Region Entrance/Intrusion Detection, Crossover/Fence Trespassing;		
Image Uniformity Optimization	Automatic Flat Field Correction (FFC); Thermal and Temporal Triggers		
SD Card Snapshot Capture	Support for 32GB SD Card (sold separately)		
System Integration			
Ethernet	10/100 Mbps		
External Analytics Compatible	Yes		
Control Input/Output	1x Dry Contact in; 1x Relay Out (rated load 0.025A@5VDC)		
Network APIs	FLIR SDK, FLIR CGI, ONVIF Profile S		
Network			
Supported Protocols	IPv4, HTTP, Bonjour, UPnP, DNS, NTP, RTCP, TCP, UDP, ICMP, IGMP, DHCP, ARP, FTP, RTP/RTSP, Unicast/Multicast, TCP/IP, HTTP, IEEE 802.1X		
General			
Weight with sunshield	7.5/9/13/19/25/35mm 1.8kg (4 lb.) - 60mm 2.0kg (4.5 lb.) - 75mm 2.2kg (4.75 lb.)		
Weight without sunshield	7.5/9/13/19/25/35mm 2.2kg (4.75 lb.) - 60mm 2.4kg (5.25 lb.) - 75mm 2.5kg (5.5 lb.)		
Dimensions (L, W, H)	Without sunshield: 259 x 114 x 106 mm/10.2" x 4.5" x 4.2" With sunshield: 282 x 129 x 115 mm/11.1" x 5.1" x 4.5"		
Input Voltage	Source	POE (802.3af) POE+ (802.3at) 12VDC 24VDC 24VAC(VA)	
	Heater off	<5.5W <5.5W <5.5W <5.5W <8W	
	Heater on (@ 100%)	N/A <25W <25W <25W <32W	
Surge Immunity on AC Power Lines	CE: EN55032 Class A; FCC 47 CFR Part 15, Subpart B, Class A (within CISPR 22:2008 Class A limits)		
Surge Immunity on Signal Lines	EN 55024: 2010 and 55032: 2010 to 4.0kV on AC aux power lines; EN 50130-4:2011; IEC 62599-2:2010		
Environmental			
IP Rating (Dust & Water Ingress)	IP66 & IP67		
Operating Temperature Range	-50°C to 70°C/-58°F to 158°F (Continuous Operation) -40°C to 70°C /-40°F to 158°F (Cold Start)		
Storage Temperature Range	-50°C to 85°C/-58°F to 185°F		
Humidity	0-95% relative humidity		
Shock	MIL-STD-810G "Transportation"		
Vibe	IEC 60068-2-27		
De-Icing / Anti-Icing	MIL-STD-810 F, Method 521.2 - 6mm ice, 120 minutes with POE+, 4mm ice with POEaf FC-304, FC-305, FC-610 & FC-608 with Cold Weather kit - not yet available.		
Warranty & Regulatory			
Approvals	CE: EN55032 Class A; FCC 47 CFR Part 15, Subpart B, Class A (within CISPR 22:2008 Class A limits)		
Certifications	IEC 60068-2-1:2007; IEC 60068-2-2:2007; ISTA-1A (Handling)		
Compliance	RoHS Directive 2011/65/EU; WEEE 2012/19/EU		
Warranty	Camera: 3 Years Sensor: 10 Years		
Optics			
Model	FOV	F#	Focal Length
FC-369 ID	69° × 56°	F1.4	9 mm
FC-344 ID	44° × 36°	F1.0	13 mm
FC-332 ID	32° × 26°	F1.0	19 mm
FC-324 ID	24° × 18°	F1.0	13 mm
FC-317 ID	17° × 13°	F1.0	19 mm
FC-313 ID	13° × 10°	F1.1	25 mm
FC-309 ID	9.2° × 7.0°	F1.1	35 mm
FC-305 ID	5.4° × 4.1°	F1.25	60 mm
FC-304 ID	4.3° × 3.3°	F1.1	75 mm
FC-690 ID	90° × 69°	F1.2	7.5 mm
FC-669 ID	69° × 56°	F1.4	9 mm
FC-644 ID	44° × 36°	F1.0	13 mm
FC-632 ID	32° × 26°	F1.0	19 mm
FC-625 ID	25° × 20°	F1.1	25 mm
FC-617 ID	17° × 14°	F1.1	35 mm
FC-610 ID	10° × 8.2°	F1.25	60 mm
FC-608 ID	8.6° × 6.6°	F1.1	75 mm



亦则（北京）系统技术有限公司
 全国咨询热线：010-52878577
 网址：www.eze.net.cn
 邮箱：lixiaohong@eze.net.cn/
 panwenzhong@eze.net.cn
 联系电话：13910603180/
 13810629767

